

Cleveland Wheelers Open Hillclimb

Sunday 30th September 2018

Supported by The House Designerwear, Yarm

Run For & On Behalf Of CTT Under Their Rules & Regulations

Event Secretary

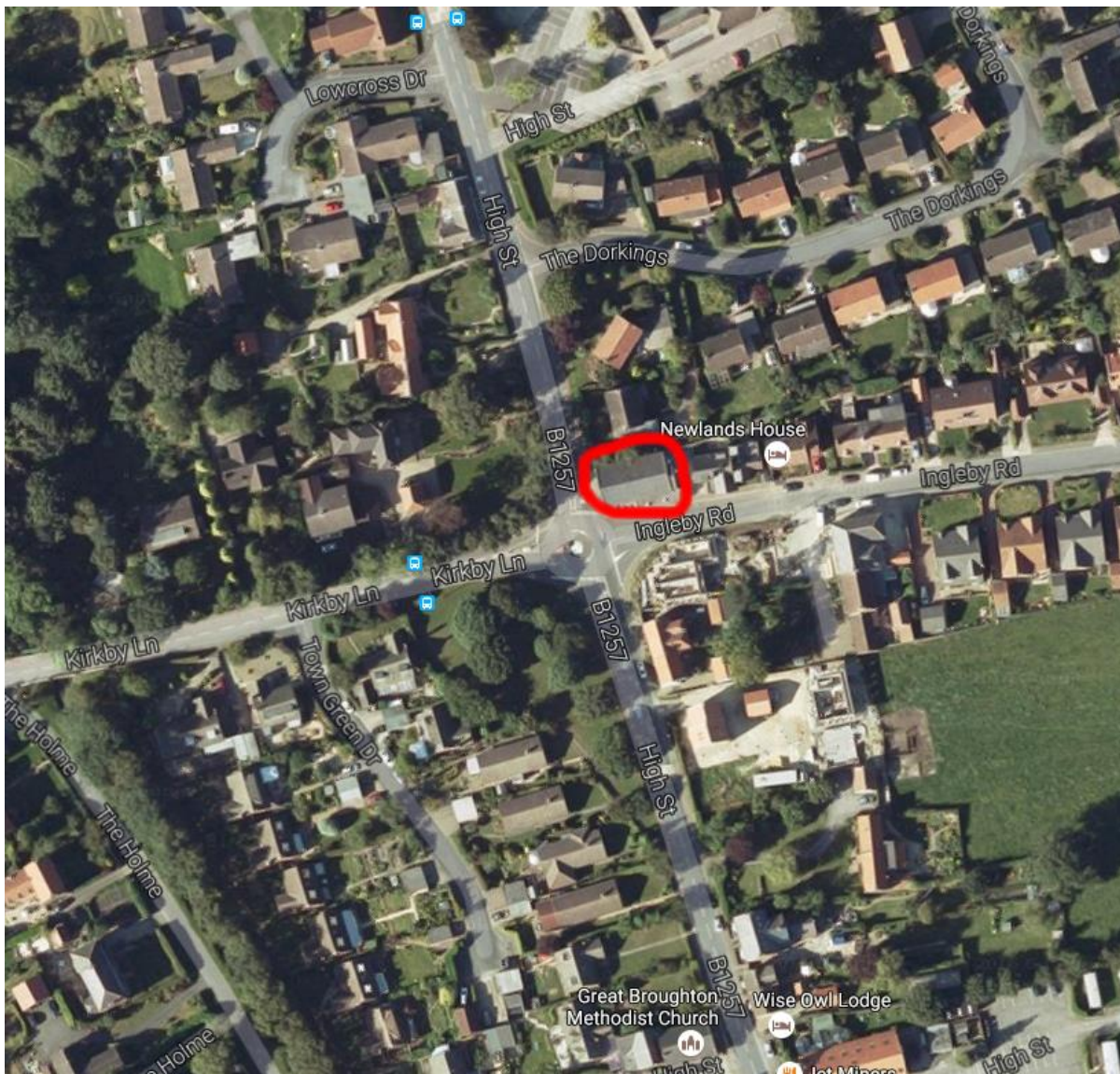
Steven Tilly. Email: secretary@clevelandwheelers.com Tel: 07982 255809

Event HQ

Even HQ is at Great Broughton Village Hall, Ingleby Road, Great Broughton, Cleveland, TS9 7ER.

This is the building on the left, at the mini-roundabout as you come into Great Broughton from the Stokesley direction (ringed in red, below).

Event HQ is open for sign-on from approximately 9.00. First off is 10:01.



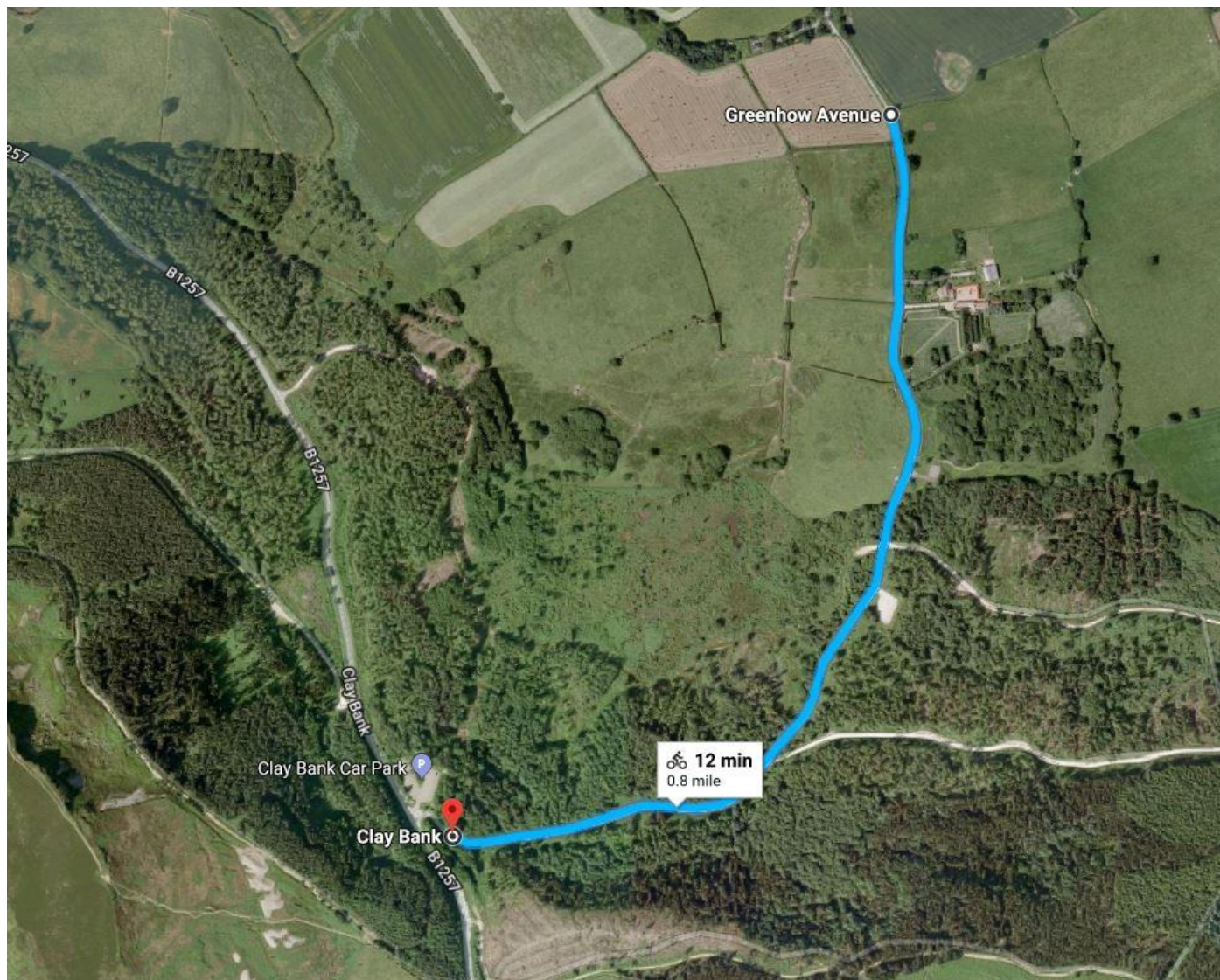
There is **NO PARKING** whatsoever at the HQ, only on adjacent roads.

The best procedure if coming by car is to stop in at HQ in your car, sign on, then proceed to the car park at the top of Clay Bank. This is the easiest way to get to the start line too.

DO NOT warm up on Turbo Trainers in residential areas, try to keep it to the car parks. No warming up at HQ.

Course Description

The course begins on the unclassified road between Ingleby Greenhow and the top of Clay Bank. It begins by a field gate approx. 0.88 miles from the top of Clay Bank (the finish line) and will be clearly marked by a start flag and by the presence of start timers.



The course is straight up this unclassified road, approximately 0.88 miles, climbing approximately 300ft, having an average grade of about 8% and a maximum grade of 16%.

A link to the route can be found here in RideWithGPS <https://ridewithgps.com/routes/28647473>

The official Strava segment is here <https://www.strava.com/segments/18914023> so you all know what times to expect!

The finish is at the top of the bank, just before the junction for the car park/main road. It will be clearly marked with a finish flag and by the presence of timekeepers & marshals.

Getting To The Start

The easiest way is to drop down from the car park at the top of Clay Bank (the finish location). If you're not coming by car and would rather not cycle up Clay Bank just to drop down it again, there are two other ways of getting there, both about 3.5 miles long. Local riders will be pretty familiar with this, but for those who are not:



This is a link to the Google Maps route selection shown above: <https://tinyurl.com/y86scex7>

This provides two options to get to the start line that don't involve climbing Clay Bank.

Warnings & Advisories

No warming-up on any part of the course once the event has started.

No U-Turns in the vicinity of the start/finish areas

CTT recommends the use of helmets by all competitors and this is **MANDATORY** for all competitors under 18 years of age.

Results Service

A live update is usually available in the finish area car park (weather dependant). Final results will be displayed in event HQ at the end of the event and prizes awarded once all times are ratified.

Café

A café will be available in Event HQ with cakes, sandwiches & refreshments. Donations are kindly invited for these refreshments, all proceeds of which go to charitable causes selected by Cleveland Wheelers CC.

Prizes

We are proud to announce that from this year there will be a new trophy awarded for Best Teesside Veteran (i.e. age 40+). This trophy has been donated by the Fietsen Tempo club in memory of team member Rob Hughes who sadly lost his battle with cancer earlier this year. Clay Bank was a favourite spot of his, so this is a fitting memorial.

Best Combined Time (CWCC + SWCC Hillclimbs)

1. £TBC

Scrach

1. £60
2. £30
3. £15

Ladies

1. £30
2. £20
3. £10

Veterans (40-49, 50-59, 60-69, 70+)

1. £20

Plus Fietsen Tempo Rob Hughes Memorial Shield to fastest Teesside Vet overall.

Juniors (Separate cats for Male/Female)

1. £30
2. £20
3. £10

Juveniles (Separate cats for Male/Female)

1. £30
2. £20
3. £10

CWCC (Highest placed CWCC first claim member)

1. £20